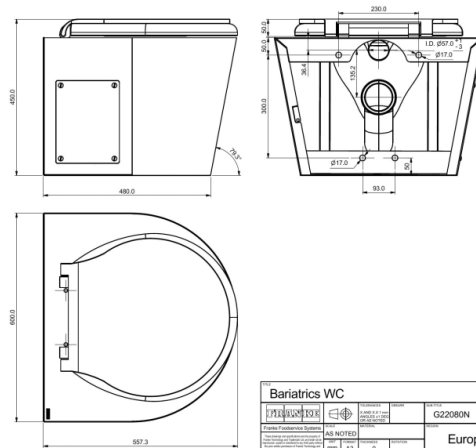


Bariatric surgery WC

MODEL RANGE: CAMPUS | G22080N | 205.0000.020

WCs and urinals | WCs



The Bariatric toilet with heavy duty plastic seat and lid, is manufactured from grade 1.4301 (304) stainless steel with a material thickness of 1.5 mm in a satin polish finish. The specially designed floor standing wc for bariatric patients is fitted with a large seat and lid which gives increased support and comfort for the user. The seat width of 500 mm provides stability and security for users weighing up to 381 kg (60 stones). Complies with BS EN 997 for 4 litre flushing and can be flushed with a conventional 6 litre duct mounted cistern. Ideal for hospitals, doctor's surgeries, specialist clinics and nursing homes.

CE Certified

Max user weight 381 kg

Dimensions 600 x 555 x 400 mm (W x H x D)

Technical data

| | |
|---------------------------|--------------------------------|
| Material thickness | 1.50 mm |
| Overall depth | 555.00 mm |
| Overall height | 400.00 mm |
| Overall width | 600.00 mm |
| Material | Stainless steel |
| Material code | 1.4301 Chrome Nickel steel V2A |
| Tailor made | No |
| Type of mounting | Wall and floor mounting |
| Surface finish | Satin finished |
| Outlet size | DN 100 |
| Type of WC | Floor standing |
| Minimum flushing capacity | 4.00 liter |
| Toilet seat colour | White |
| Product code | 205.0000.020 |