



## F59/500/L - IMC MF5L Counter-top Vegetable Peeler - with Carborundum Liner - 1 Phase - W 366 mm - 0.25 kW

The high-output, versatile MF5L (1PH) can be used to quickly peel a range of vegetables - making it an ideal addition for small to medium kitchens.

- ✓ Able to peel up to 134kg of vegetables per hour - in 5kg batches
- ✓ With carborundum liner to reduce peeling times even further
- ✓ Interlocking lid and door ensure safe operation
- ✓ Perspex viewing pane allows you to monitor the peeling progress
- ✓ Adjustable timer ensures accurate, repeatable peeling time
- ✓ Modular construction facilitates easy maintenance
- ✓ Thicker peeling plate delivers longer operating life
- ✓ Suitable for small to medium kitchens with single-phase power supply

### Specifications

Summary		Power and Performance	
Brand	IMC	Total Power kW	0.25
Range	MF Multi-Functional Peeler	HP	0.33
Power Type	Electric	IP Rating	IP55
Unit Type	Counter-top		
Available in UK Only	No		
UK Warranty	2 Years Parts and Labour Warranty		
Export Warranty	Contact your local dealer		
Mounting	Counter-top		
GTIN	5056105198758		

Key Specifications		Capacity	
Operator Safety	Interlocks	Capacity Kg per Hour	134
Timer	Yes		
Drain Location	Rear		
WRAS Approved	WRAS Compliant		
Airbreak	Yes		

Weights and Dimensions		Supply Connections	
Unit Height (External) mm	634	Requires Installation	Yes
Unit Width (External) mm	366	Requires Electrical Supply	Yes
Unit Depth (External) mm	519	UK 3 Pin Plug	No
Net Weight Kg	31.5	Requires Hardwiring	Yes
		Motor Rating Watts	250
		Single Phase Amps	1.6
		Single Phase Voltage	230
		Water Connection Pressure Bar	2.7-3.8 [40-55 psi]
		Drain Connection	38mm
		Water Connection	12mm

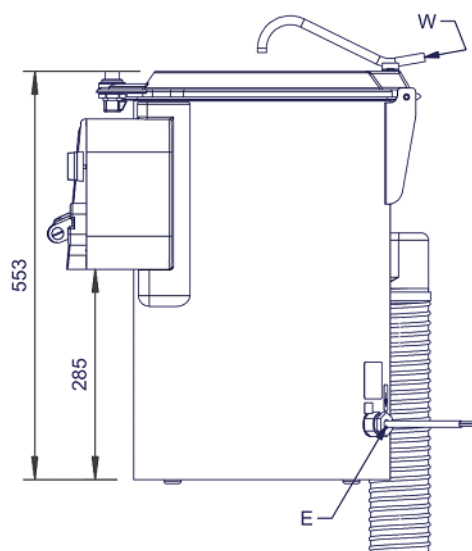
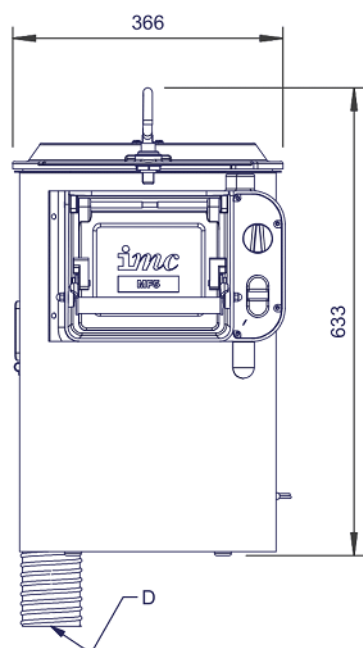
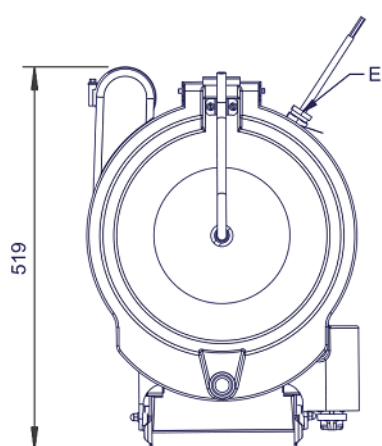
## Shipping

Packed Weight Kg	34.65
Packed Height cm	60
Packed Width cm	51
Packed Depth cm	39

## Available Accessories

<b>S59/163</b>	Carborundum Peeling Plate for MF5/MF5L Vegetable Peeler
<b>S59/245</b>	Stand and Filter Basket for MF5/MF5L Vegetable Peeler

## Technical Picture





#### Lincat Limited

Whisby Road,  
Lincoln, LN6 3QZ,  
United Kingdom

**Company No:** 2175448

A member company of



#### Customer Care

**Tel:** +44 1522 875500

**Email:** [care@lincat.co.uk](mailto:care@lincat.co.uk)

#### Export Customers

**Tel:** +44 1522 875536

**Email:** [export@lincat.co.uk](mailto:export@lincat.co.uk)

#### Opening Hours

**Monday – Friday:**

8.30am – 5pm