



Add on faucet available separately.

In accordance with our policy of continued development we reserve the right to alter design and specifications without prior notification

H2O Single Deck Mounted Pre-Rinse Unit with Flexible Hose

Product DP631BR

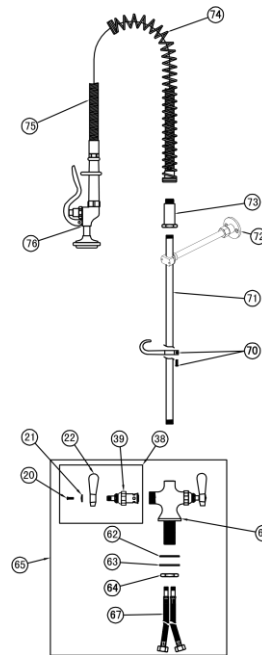
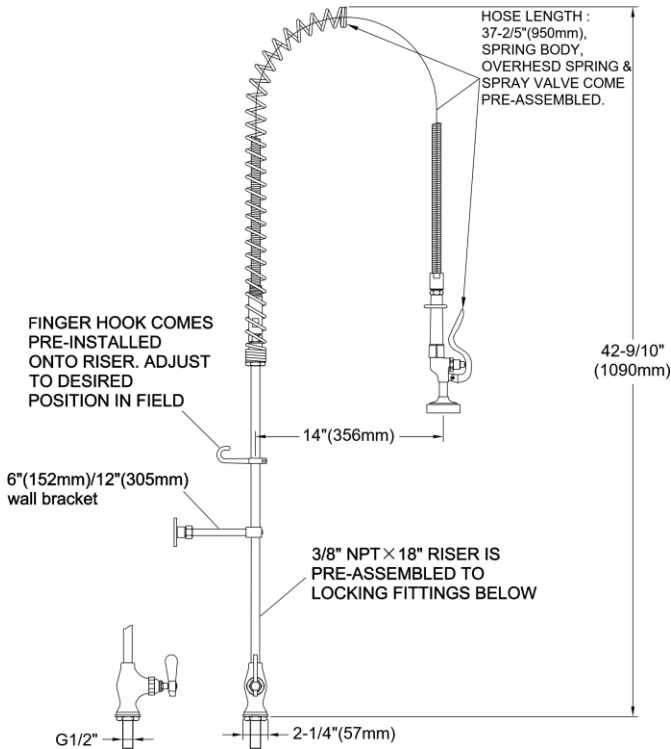
Description

Single deck mounted pre-rinse unit with flexible hose.
WRAS Approved

- 8" (203mm) centre deck mounted
- 20" (510mm) riser brass pipe
- 44" (1118mm) flexible stainless steel hose, SANTOPRENE inner pipe
- 6" (152mm) or 12" (305mm) wall bracket

Benefits

- Heavy duty construction
- Includes check valve to prevent cross flow
- The spray valve conforms to ANSI/ASTM F2324-03
- Ideal for food service, commercial kitchens, restaurants and hotel applications.
- Accessories and add-on taps are also available for all units.



Part Number Guide		
20	Screw, Lever, Handle	Stainless Steel
21	Index Button, Red-Hot	ABS
22	Lever Handle, Zinc-Hot	Zinc
38	Asm, Lever Handle (LH)	
39	Asm, Spdl LH-Eterna W/Spring	Brass H59-1
62	O-Ring	EPDM
63	Level	Stainless Steel
64	Locknut, Shank	Brass H59-1
65	Asm, Body	Stainless Steel
66	Bode, Faucet	Brass H59-1
67	Flexible Hose	
70	Assembly, Finger Hook & Screw	Brass & Stainless Steel
71	Nipple. 3/8" x 24	Stainless Steel
72	Wall Bracket	Brass H59-1
73	Spring Body	Brass H59-1
74	Spring, Overhead	Stainless Steel
75	Assembly, Flex S/S Hose	Stainless Steel
76	Assembly, Spray Valve	Brass H59-1



DIE-PAT DIVISIONS LIMITED

The Die-Pat Centre | Broad March | Daventry NN11 4HE
Tel: 01327 311144 www.die-pat.co.uk

Created: 02/08/17 | Last revised: 02/08/17