



Add on faucet
available separately.

H2O Double Deck Mounted Pre-Rinse Unit with Flexible Hose

Product DP601BR

Description

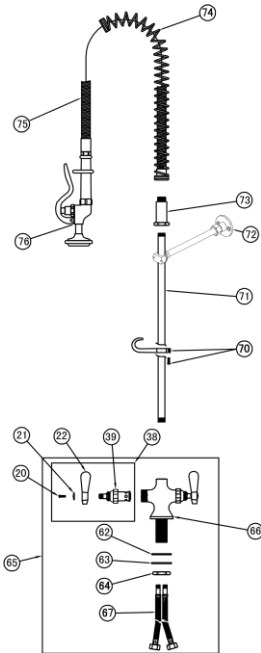
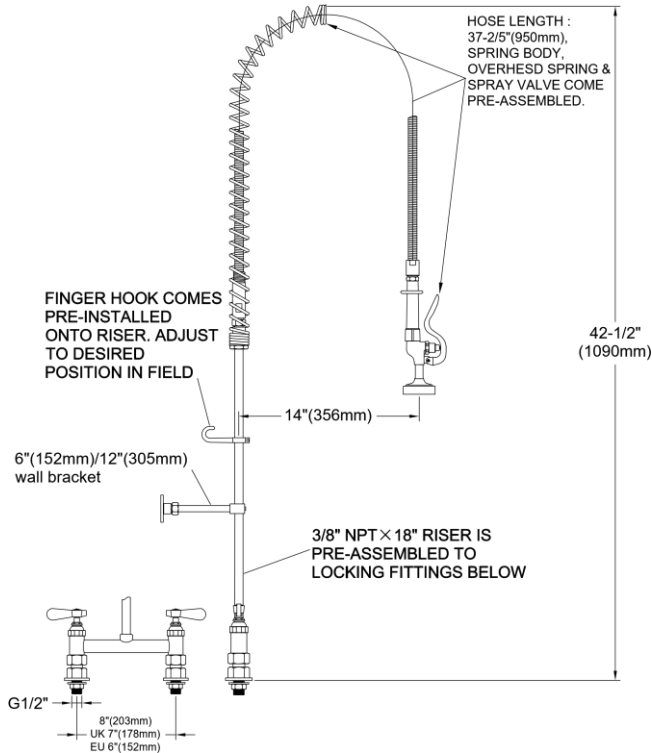
Double deck mounted Pre-Rinse Unit with flexible hose.
WRAS Approved

- 8" (203mm) centre deck mounted
- 20" (510mm) riser brass pipe
- 44" (1118mm) flexible stain less steel hose, SANTOPRENE inner pipe
- 6" (152mm) or 12" (305mm) wall bracket

Benefits

- Heavy duty construction
- Includes check valve to prevent cross flow
- The spray valve conforms to ANSI/ASTM F2324-03
- Ideal for food service, commercial kitchens, restaurants and hotel applications.
- Accessories and add-on taps are also available for all units.

In accordance with our policy of continued development we reserve the right to alter design and specifications without prior notification



Part Number Guide		
20	Screw, Lever, Handle	Stainless Steel
21	Index Button, Red-Hot	ABS
22	Lever Handle, Zinc-Hot	Zinc
38	Asm, Lever Handle (LH)	
39	Asm, Spld LH-Eterna W/Spring	Brass H59-1
62	O-Ring	EPDM
63	Level	Stainless Steel
64	Locknut, Shank	Brass H59-1
65	Asm, Body	Stainless Steel
66	Bode, Faucet	Brass H59-1
67	Flexible Hose	
70	Assembly, Finger Hook & Screw	Brass & Stainless Steel
71	Nipple, 3/8" x 24	Stainless Steel
72	Wall Bracket	Brass H59-1
73	Spring Body	Brass H59-1
74	Spring, Overhead	Stainless Steel
75	Assembly, Flex S/S Hose	Stainless Steel
76	Assembly, Spray Valve	Brass H59-1



DIE-PAT DIVISIONS LIMITED

The Die-Pat Centre | Broad March | Daventry NN11 4HE
Tel: 01327 311144 www.die-pat.co.uk

Created: 02/08/17 | Last revised: 02/08/17