



WATER



GAS



ENVIRONMENT



PEST CONTROL

BIOLOGICAL DRAIN MAINTENANCE SYSTEM

JustCatering.Com

BIOCEPTOR

The combined technology, Ecological Solution, Drain Maintenance System

BioCeptor is a combined technology approach to drain maintenance. The advanced drain maintenance system includes Mechline's unique proven GreasePaK Biological treatment solution with the a new interception and retention chamber designed to maximise the retention and management of fats, oils and grease (FOG) onsite and introduce effective treatment.

Distributed By

JustCatering.Com Ltd

10 Jessop Avenue, Norwood Green, Middlesex, UB2 5UY, UK

Tel/Fax: +44 (0)2088431712 Mobile: 07929291670

E-mail: sales@justcatering.com Web: <http://www.justcatering.com>



HOW IT WORKS...

The combined technologies used in the BioCeptor create a highly effective environment, perfect for permanent degradation of FOG. The BioCeptor's chamber slows down the flow of wastewater discharged from a food service operation, intercepting the FOG through the design of internal baffles. The unique and powerful GreasePaK Multi-Strain Grease Degradator (MSGD) fluid is dosed into the chamber, transforming it into an active biological treatment zone [BTZ]. The BTZ provides an effective environment for the breaking down of the FOG and starches into irreversible compounds that can easily pass through drainage and, most importantly, do not reform down the line. An entirely ecological solution, the BioCeptor utilises the traditional principles of entrapment and retention alongside the natural process of bioremediation.

BioCeptors airtight BTZ chamber is sealed to prevent odours and the compact, wall mounted GreasePaK dispenser automatically doses the multi-strain solution without the need for the operator to remember. The BioCeptor provides an optimum all-round FOG management solution system.

BioCeptors / GreasePaK Multi-Strain Grease Degradator fluid has naturally occurring, non-pathogenic bacteria, containing in excess of 500 million 'bugs' per gram. The unique formula permanently breaks down FOG and starches in the drain so they cannot reform or solidify.



THE BENEFITS...

- Stylish, functional design. Rounded modern design, no sharp corners for organic waste to collect
- Easy to remove baffles to facilitate easy cleaning and maintenance
- Optimised inner working design to maximise the retention of FOGs
- Air tight chamber with sealed lid, fitted with mechanical fittings for engineers to access tank. No Odours
- Outer modern smooth finish designed for easy cleaning and hygiene in mind
- Made from high strength injection moulded high-density polyethylene
- Height adjustable feet
- Connection for BBA Approved GreasePaK
- Can reduce the frequency of regular service, cleaning and maintenance
- Designed and Sized in accordance with PDI and ASME standards
- Limited Lifetime warranty on Tank
- Simple to install, supplied with universal fittings - R to L or L to R



WATER



GAS



ENVIRONMENT



PEST CONTROL

BIOLOGICAL DRAIN MAINTENANCE SYSTEM



Inside the BTZ chamber?

Fats are molecules made up of a glycerol head and a long chain of fatty acids. They are large, insoluble in water and can pose a considerable problem for pipes and drains. The BioCeptors MSGD fluid is designed to efficiently break down these molecules, keeping drains clear and free flowing. The

process - Firstly lipase, an enzyme, splits the glycerol head from the long chain fatty acid. On its own glycerol is soluble and is flushed away or taken up by bacteria. The remaining fatty acid chains are then tackled by specialist bacteria within the MSGD fluid. These are broken down into much shorter chains that again can be flushed away or taken up by bacteria. Simple—when you have the right tools!

This MSGD fluid contains a blend of both aerobic bacteria (that requires oxygen) and facultatively anaerobic bacteria (that can work with or without oxygen), making it extremely adaptable to many environments. It performs well over a wide range of conditions: low pH, oxygen, temperature and nutrients. Specifically, the facultatively anaerobic bacteria gets to work in the BioCeptor's airtight BTZ chamber, attacking the build-up of sludge and reducing the frequency in which the chamber needs maintenance and / or cleaning.

By combining multiple technologies into one complete solution, the BioCeptor provides the optimum environment for breaking down FOG. Habitually, bacteria clings to all available surfaces to form a sticky biofilm. By dosing the specialist MSGD fluid into the BioCeptor's BTZ chamber, a biofilm is able to form on the walls of the chamber and the FOG layer that has risen to the top. This environment provides ample contact time between the bacteria and FOG, which reduces the density of the captured surface FOG. Due to this reduction in the density of the retained FOG layer the period for schedule cleanouts of the grease trap can be lengthened.

As well as forming within the trap, biofilms also populate the drain lines downstream from the chamber, this stops them from reforming further along the line ensuring that pipework and drains remain adequately protected. Under the existing building regulations 2000, dosing with GreasePaK can work alone or in conjunction with conventional grease traps and is the only system of its kind to achieve the building industry's accreditation through the British Board of Agreement* (BBA) as a standalone effective means of grease removal.

CLEANING

The BioCeptor BTZ is optimally designed to maximise the retention of FOG. The BioCeptor BTZ is manufactured from a high strength injection moulded high-density polypropylene that provides robustness for the application. The outer, modern smooth finish is designed for easy cleaning with hygiene in mind. The inner design also allows for ease of service and easy to remove baffles to facilitate easy cleaning and maintenance. With rounded internal surfaces, organic debris should be totally accessible, unlike traditional metal Grease Traps.





WATER



GAS



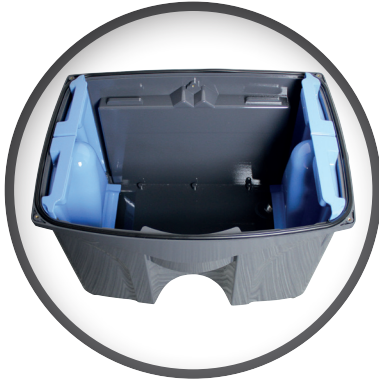
ENVIRONMENT



PEST CONTROL

BIOLOGICAL DRAIN MAINTENANCE SYSTEM

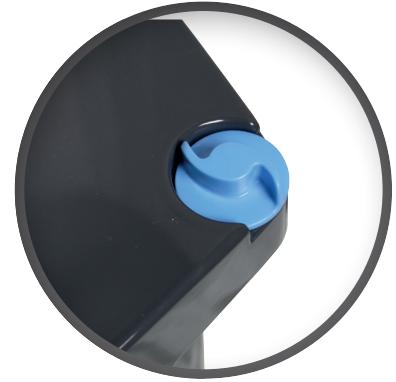
KEY FEATURES



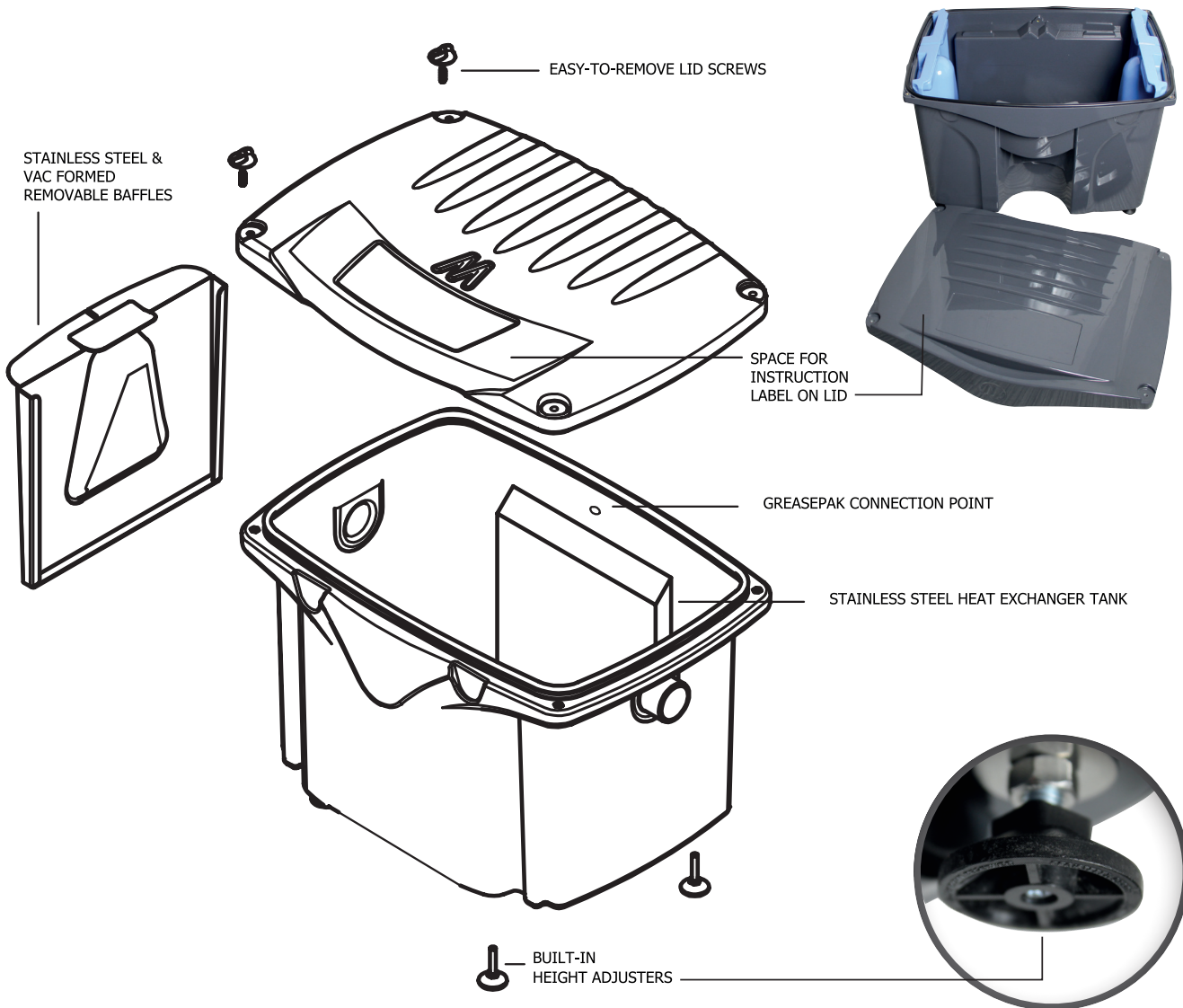
Optimised inner working design to maximise the retention of FOGs



Easy to remove baffles to facilitate easy cleaning and maintenance.



Easy to remove lid screws. Hand tightened, no special tool needed.





WATER



GAS



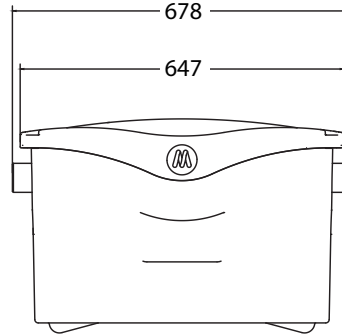
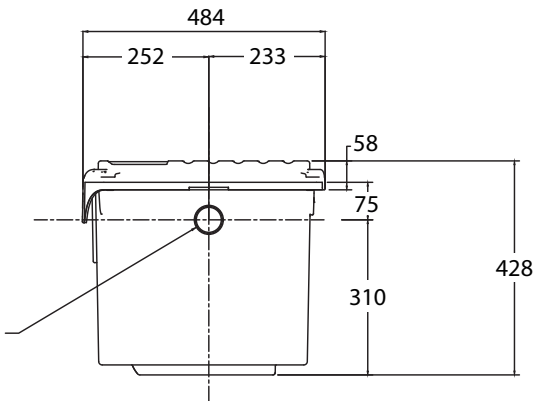
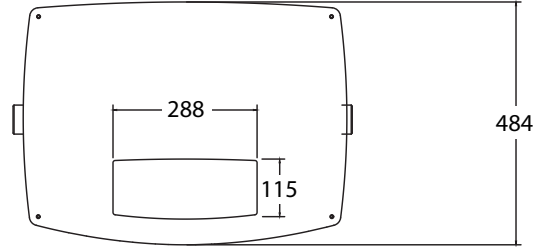
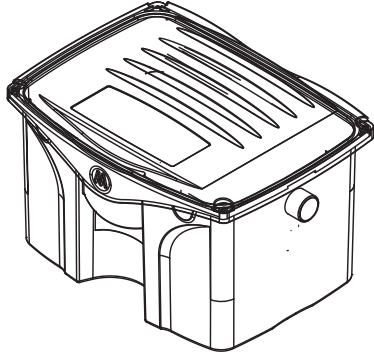
ENVIRONMENT



PEST CONTROL

BIOLOGICAL DRAIN MAINTENANCE SYSTEM

DIMENSIONS



OVERALL WIDTH 678.00 mm
 OVERALL HEIGHT 427.50 mm
 OVERALL DEPTH 485.32 mm



JustCatering.Com

**Distributed By
 JustCatering.Com Ltd**

10 Jessop Avenue, Norwood Green, Middlesex, UB2 5UY, UK

Tel/Fax: +44 (0)2088431712 Mobile: 07929291670

E-mail: sales@justcatering.com Web: <http://www.justcatering.com>