



Aqua Glass Washers

Important: If you are installing a glass or dishwasher in a hard water area, we recommend you fit a water softener.

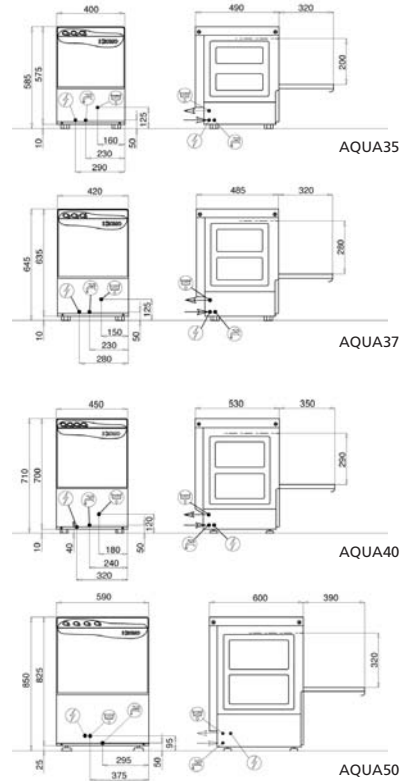


12 LITRE SOFTENER

AQUA37, 40 & 50
NOW AVAILABLE
WITH DRAIN PUMP



G2-STU



AQUA35



AQUA37



AQUA40



AQUA50

Specification

- High grade 304 stainless steel construction
- Pressed tank and rounded corners to aid cleaning of machine
- Double skin door for quieter running and improved efficiency
- Rotating wash and rinse arms removable for cleaning
- Fitted with integral non-return valve
- Automatic detergent and rinse aid dosing
- 2 minute cycle
- 3/4" BSP Water inlet valve
- Models 37, 40 & 50 available with integral drain pump
- Supplied with 2 glass baskets as standard
- Supply 13 amp

OPTIONAL EXTRAS	CODE	RRP
Water Softener - 12 litres	DEP12	£135.19
Universal stand	G2-STU	£69.27

MANUFACTURER	MODEL	PIECES/CYCLE	PIECES/HR	BASKET SIZE	TOTAL POWER	H x W x D	WEIGHT	RRP
KROMO	AQUA35	13 pint glasses	810	350 x 350	2.3kw	585 x 400 x 490	34.5 kgs	£952.00
KROMO	AQUA37	16 pint glasses	1080	370 x 370	2.8kw	665 x 420 x 485	37.5 kgs	£1,156.00
KROMO	AQUA37DP	16 pint glasses	1080	370 x 370	2.8kw	665 x 420 x 485	38 kgs	£1,281.00
KROMO	AQUA40	17 pint glasses	1170	400 x 400	2.8kw	710 x 450 x 530	42 kgs	£1,219.00
KROMO	AQUA40DP	17 pint glasses	1170	400 x 400	2.9kw	710 x 450 x 530	43 kgs	£1,343.00
KROMO	AQUA50	25 pint glasses	2040	500 x 500	2.9kw	850 x 590 x 600	65.5 kgs	£1,536.00
KROMO	AQUA50DP	25 pint glasses	2040	500 x 500	2.9kw	850 x 590 x 600	66 kgs	£1,659.00

Capacity based on 90mm diameter glasses



Aqua 13amp Dishwasher



12 LITRE SOFTENER

Important: If you are installing a glass or dishwasher in a hard water area, we recommend you fit a water softener.

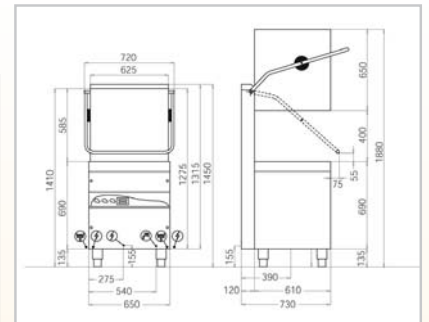
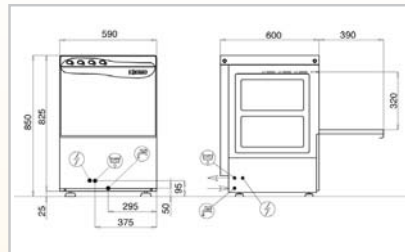


AQUA50BT

Hood Dish Washers



HOOD110



OPTIONAL EXTRAS	CODE	RRP
Water Softener - 12 litres	DEP12	£135.19

Hood Dish Washers Specification

- High grade 304 stainless steel construction
- Stainless steel wash & rinse arms
- Stainless steel surface filter
- Fitted with break tank and rinse booster WRAS approved
- Automatic detergent and rinse aid dosing
- Supplied with 1 x glass basket, 2 x dish basket & 2x cutlery holder
- 1 – 2 minute cycle
- 30 amp or 3 phase supply

Note: *See page 145 for Pre-rinse Spray Arm

Aqua 13amp Dishwasher Specification

- High grade 304 stainless steel construction
- Pressed tank and rounded corners to aid cleaning of machine
- Double skin door for quieter running and improved efficiency
- Rotating wash and rinse arms removable for cleaning
- Fitted with break tank and rinse booster WRAS approved
- Automatic detergent and rinse aid dosing
- 2 minute cycle
- ¾" BSP Water inlet valve
- Available with integral drain pump
- Supplied with 1 x glass basket, 1 x dish basket & 1 x cutlery holder
- Supply 13 amp

MFR	MODEL	TYPE	PIECES/CYCLE	PIECES/HR	BASKET SIZE	TOTAL POWER	H x W x D	WEIGHT	RRP
KROMO	AQUA50BT	D/WASHER	18 Dishes	500	500 x 500mm	2.9kw	850 x 590 x 600	67.5 kgs	£1,665.00
KROMO	AQUA50BTDP	D/WASHER	18 Dishes	500	500 x 500mm	2.9kw	850 x 590 x 600	68 kgs	£1,795.00
KROMO	HOOD110BT1PH	PASSTHRU D/W	18 dishes	4080	500 x 500	7.7kw	1410 x 720 x 730	120 kgs	£2,988.00
KROMO	HOOD110BT3PH	PASSTHRU D/W	18 dishes	4080	500 x 500	10.9kw	1410 x 720 x 730	120 kgs	£2,988.00

KROMO Dupla Dish Washers

WRAS
APPROVED
PRODUCT

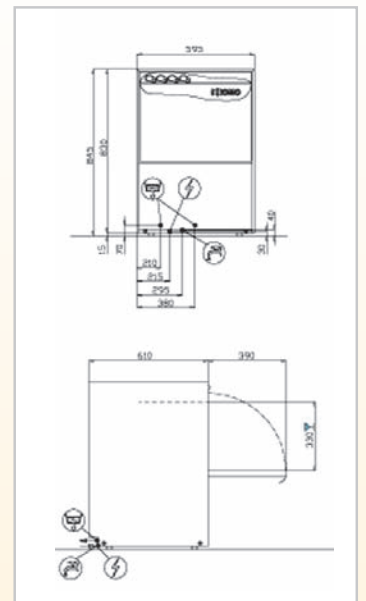
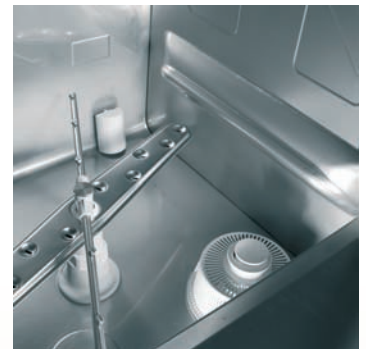
Important: If you are installing a glass or dishwasher in a hard water area, we recommend you fit a water softener.



DUPLA50



12 LITRE SOFTENER



Specification

- High grade 304 stainless steel construction
- Double skinned for soundproofing and heat insulation
- Pressed tank and rounded corners to aid cleaning of machine
- Stainless steel wash & rinse arms with press split jets
- Double filter to protect wash pump
- Fitted with break tank and rinse booster WRAS approved
- Automatic detergent and rinse aid dosing
- 2 – 3 minute cycle
- Supplied with 1 x glass basket, 1 x dish basket & 1 x cutlery holder
- Available with integral drain pump
- 30 amp or 3 phase supply

OPTIONAL EXTRAS

Water Softener - 12 litres

CODE

DEP12

RRP

£135.19

MFR	MODEL	TYPE	PIECES/CYCLE	PIECES/HR	BASKET SIZE	TOTAL POWER	H x W x D	WEIGHT	RRP
KROMO	DUPLA50BT24AMP	D/WASHER	18 dishes	2040	500 x 500	5.4kw	845 x 595 x 610	72.5 kgs	£1,967.00
KROMO	DUPLA50BT3PH	D/WASHER	18 dishes	2040	500 x 500	5.4kw	845 x 595 x 610	72.5 kgs	£1,967.00
KROMO	DUPLA50BT/DP24AMP	D/WASHER	18 dishes	2040	500 x 500	5.4kw	845 x 595 x 610	72.5 kgs	£2,091.00
KROMO	DUPLA50BT/DP3PH	D/WASHER	18 dishes	2040	500 x 500	5.4kw	845 x 595 x 610	72.5 kgs	£2,091.00