

**Distributed By
JustCatering.Com Ltd**

10 Jessop Avenue, Norwood Green, Middlesex, UB2 5UY, UK

Tel/Fax: +44 (0)8450034271 Mobile: 07006342365

E-mail: sales@justcatering.com Web: <http://www.justcatering.com>

Name: **Economy
waste
disposal
(H60751E)
0.75hp
1ph**
Art No: H60751E
Material: Stainless
steel 18/8
1.4301
ASTM304
Dimensions: 500 x 600
x 850/900
mm



H60751E Economy waste disposal unit (also suitable for connecting to mains water supply)

0.75hp Economy free standing waste disposal unit manufactured from 0.9/1.2mm thick stainless steel- satin polish finish. Suitable for fitting between tabling and sinks and can be used for either plate waste or food preparation. The motor is activated using the controls on the front panel. The unit is wired up for connection to a fused isolator (not supplied).

Unit is supported on four stainless steel legs each with adjustable feet.

Suitable for connecting to mains water supply as well as a tank fed supply.

Suitable for plate waste, left overs, vegetables and fruit, fish and chicken bones.

Dimensions: 500 x 600 x 850/900 mm

Technical specification:

Meals capacity: 400 per day

Nominal capacity: 200kg/hr

Motor voltages: 0.75hp 1phase, 0.55 kw, 240v 50hz

Motor control: Automatic reset and overload

Fuse rating: 240v 1phase 50hz 25amps

Full load current 5.6 amps

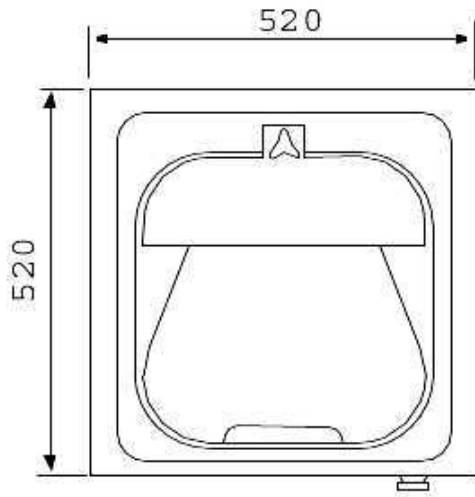
Water connection: Cold supply to 15mm pipe connector

Recommended flow rate 12 litres per min.

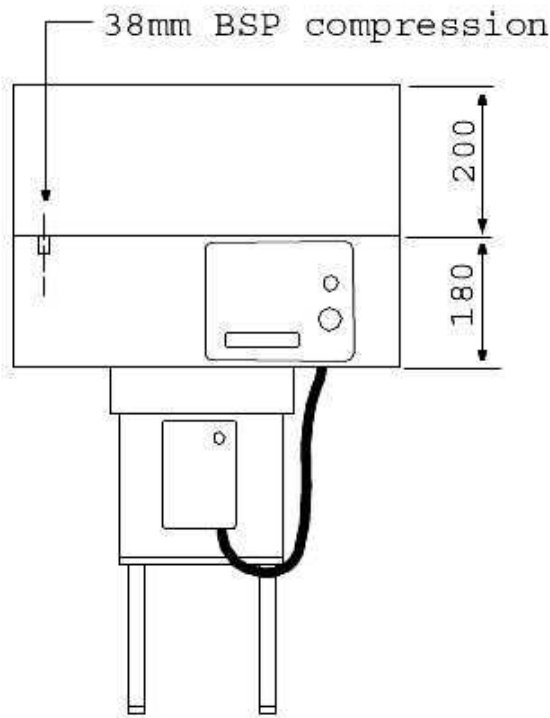
inlet pressure minimum of 0.3 bar

Waste connection: 38mm BSP outlet bend to waste

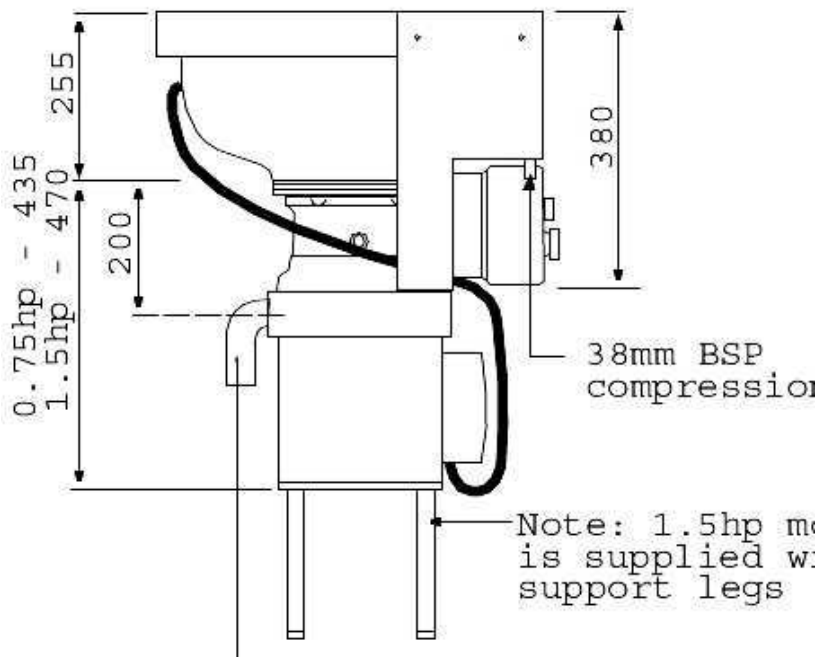
Motor: NEMA ULCSA



Plan



Front Elevation



**Distributed By
JustCatering.Com Ltd**

10 Jessop Avenue, Norwood Green, Middlesex, UB2 5UY, UK
Tel/Fax: +44 (0)8450034271 Mobile: 07006342365
E-mail: sales@justcatering.com Web: <http://www.justcatering.com>

Name: **Economy
waste
disposal
(H50751E)
0.75hp
1ph**
Art No: H50751E
Material: Stainless
steel 18/8
1.4301
ASTM304
Dimensions: 500 x 600
x 850/900
mm

**H50751E Economy waste disposal unit**

0.75hp Economy free standing waste disposal unit manufactured from 0.9/1.2mm thick stainless steel- satin polish finish. Suitable for fitting between tabling and sinks and can be used for either plate waste or food preparation. The motor is activated using the controls on the front panel. The unit is wired up for connection to a fused isolator (not supplied).

Unit is supported on four stainless steel legs each with adjustable feet.

Suitable for plate waste, left overs, vegetables and fruit, fish and chicken bones and fine pork bones.

Can only be used with a tank fed water supply.

Dimensions: 500 x 600 x 850/900 mm

Technical specification:

Meals capacity: 400 per day

Nominal capacity: 200kg/hr

Motor voltages: 0.75hp 1phase, 0.55 kw, 240v 50hz

Motor control: Automatic reset and overload

Fuse rating: 240v 1phase 50hz 25amps

Full load current 5.6 amps

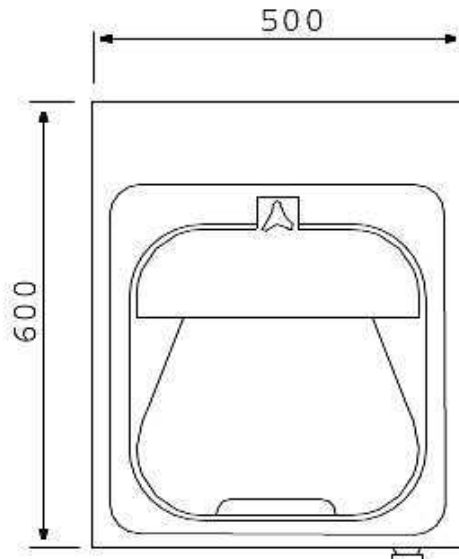
Water connection: Cold supply to 15mm pipe connector

Recommended flow rate 12 litres per min.

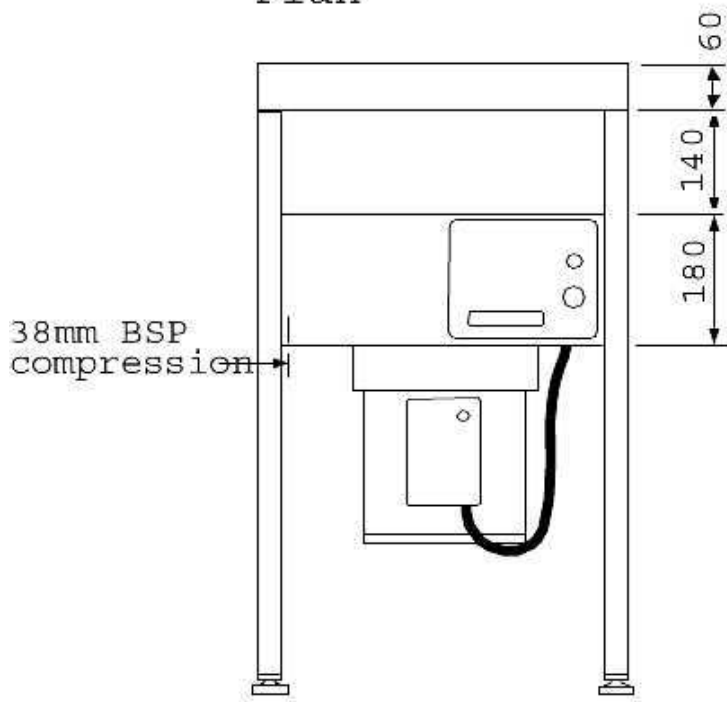
inlet pressure minimum of 0.3 bar

Waste connection: 38mm BSP outlet bend to waste

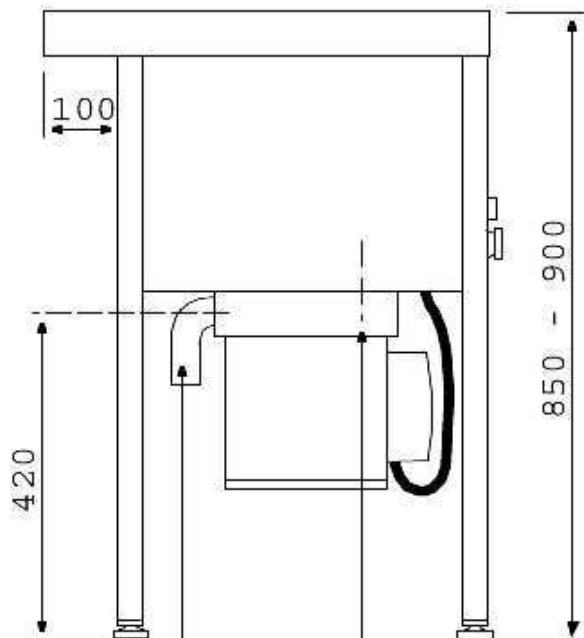
Motor: NEMA ULCSA



Plan



Front Elevation



Name: **Sink fitting waste disposal (H50753S) 0.75hp 3ph**

Art No: H50753S
 Material: Stainless steel casing with separate plastic control box

Dimensions: 330 x 508 mm high



H50753S Sink fitting waste disposal unit

0.75hp Sink fitting waste disposal unit is designed to fit into an 89mm waste outlet, with the motor being activated by a wall mounted control box.

Suitable for plate waste, left overs, vegetables and peelings, very fine fish and chicken bones.

Dimensions: 330 x 508 mm high

Technical specification:

Meals capacity: 200 per day

Nominal capacity: 100kg/hr

Motor voltages: .75hp 3phase, 0.55 kw, 414v 50hz

Motor control: Wall mounted, manual reset

Fuse rating: 415v 3phase 50hz 10amps

Full load current 1.6amps

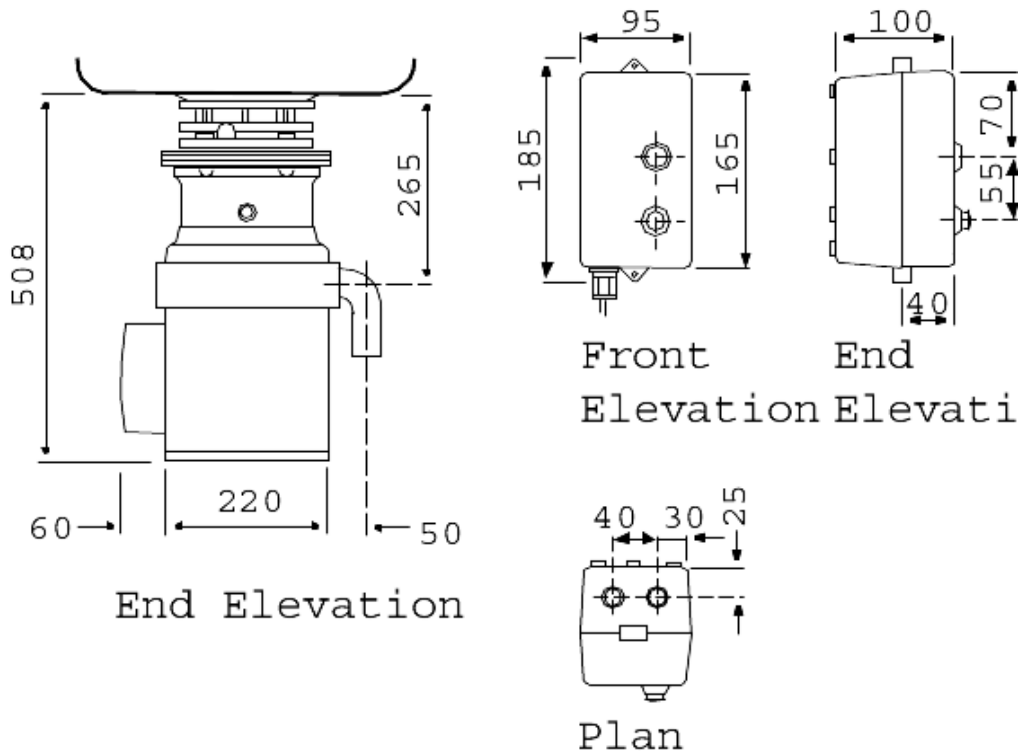
Water connection: Cold supply from sink taps

Recommended flow rate 9 litres per min.

Waste connection: 38mm BSP outlet bend to waste

Motor: NEMA ULCSA

Accessories



Close Window

Name: **Sink fitting waste disposal (H50751S) 0.75hp 1ph**

Art No: H50751S
 Material: Disposal unit cased in stainless steel with separate plastic control box

Dimensions: 330 x 508 mm high



H50751S Sink fitting waste disposal unit

0.75hp Sink fitting waste disposal unit is designed to fit into an 89mm waste outlet, with the motor being activated by a wall mounted control box.

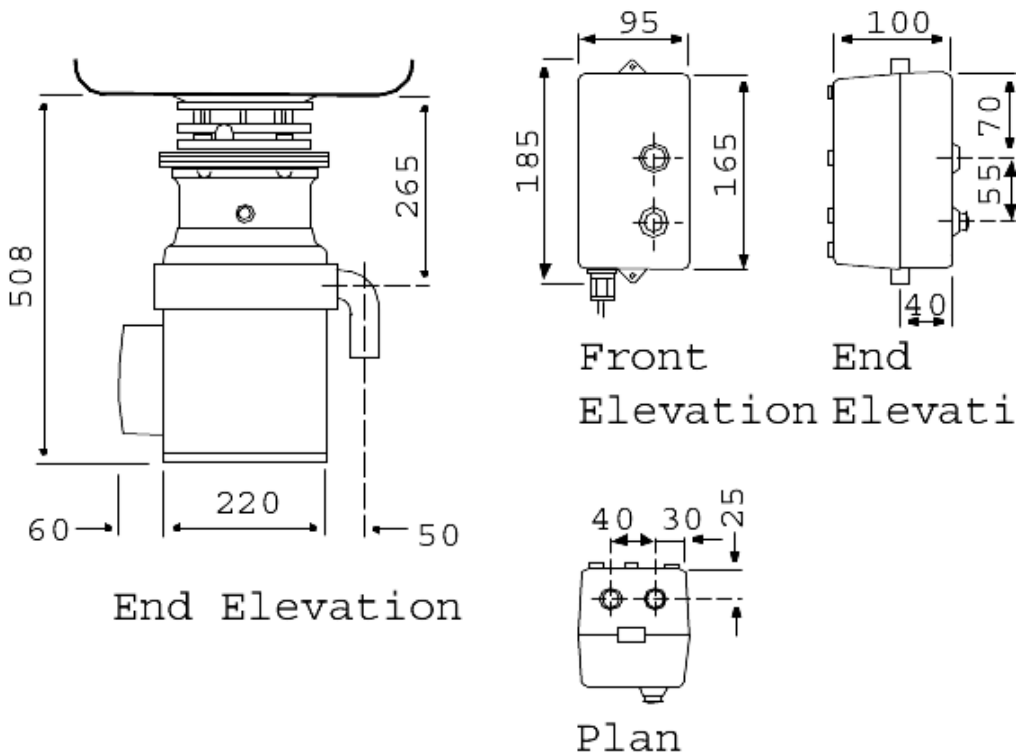
Suitable for plate waste, left overs, vegetables and peelings, very fine fish and chicken bones.

Dimensions: 330 x 508 mm high

Technical specification:

- Meals capacity: 200 per day
- Nominal capacity: 100kg/hr
- Motor voltages: .75hp 1phase, 0.55 kw, 240v 50hz
- Motor control: Wall mounted, manual reset
- Fuse rating: 240v 1phase 50hz 25amps
- Full load current 5.6amps
- Water connection: Cold supply from sink taps
- Recommended flow rate 9 litres per min.
- Waste connection: 38mm BSP outlet bend to waste
- Motor: NEMA ULCSA

Accessories



Close Window

Name: **Inset
hopper
waste
disposal
(H50753H)
0.75hp
3ph**

Art No: H50753H

Material: Stainless
steel 18/8
1.4301

Dimensions: 520 x 520
x 690 mm



H50753H Inset hopper waste disposal unit

0.75hp Inset hopper waste disposal unit for welding into dishwash tabling, manufactured from 0.9/1.2mm thick stainless steel and can be mounted to give either front, left or right hand side feed, depending on the size of tabling. The hopper and motor are supplied separately for assembly on site. The hopper is fitted with a magnetic cutlery saver. The motor is activated using the controls on the front panel, however a separate control box can be supplied as an extra - see below.

Suitable for plate waste, left overs, vegetables and peelings, very fine fish and chicken bones.

Dimensions: 520 x 520 x 690 mm

Technical specification:

Meals capacity: 400 per day

Nominal capacity: 200kg/hr

Motor voltages: .75hp 3phase, 0.55 kw, 415v 50hz

Motor control: Wall mounted, manual reset

Fuse rating: 415v 1phase 50hz 10amps

Full load current 1.6amps

Water connection: Cold supply to 15mm pipe connector

Recommended flow rate 12 litres per min.

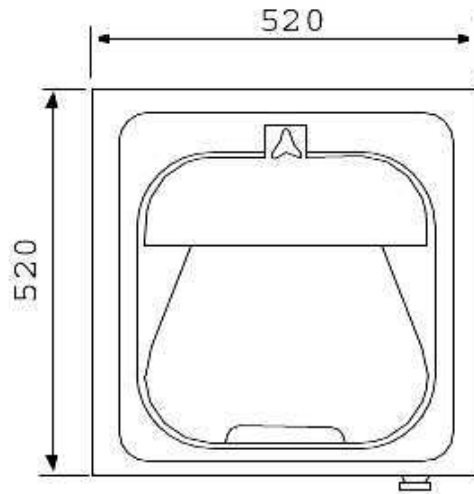
inlet pressure minimum of 0.3 bar

Waste connection: 38mm BSP outlet bend to waste

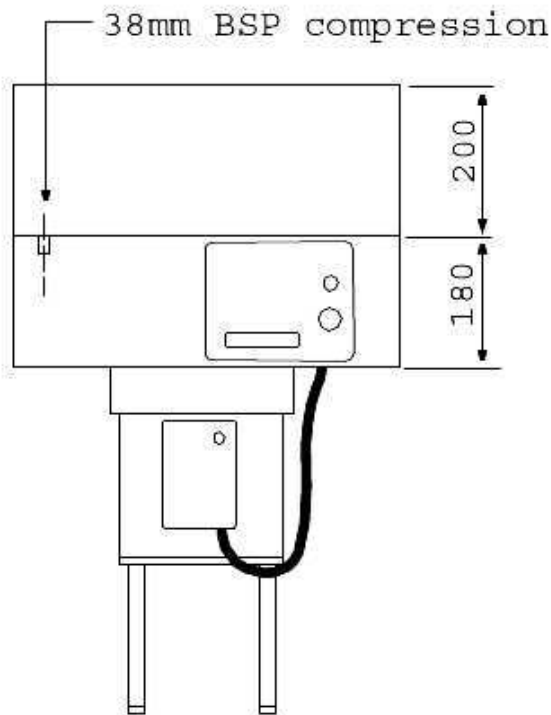
Motor: NEMA ULCSA

Extras

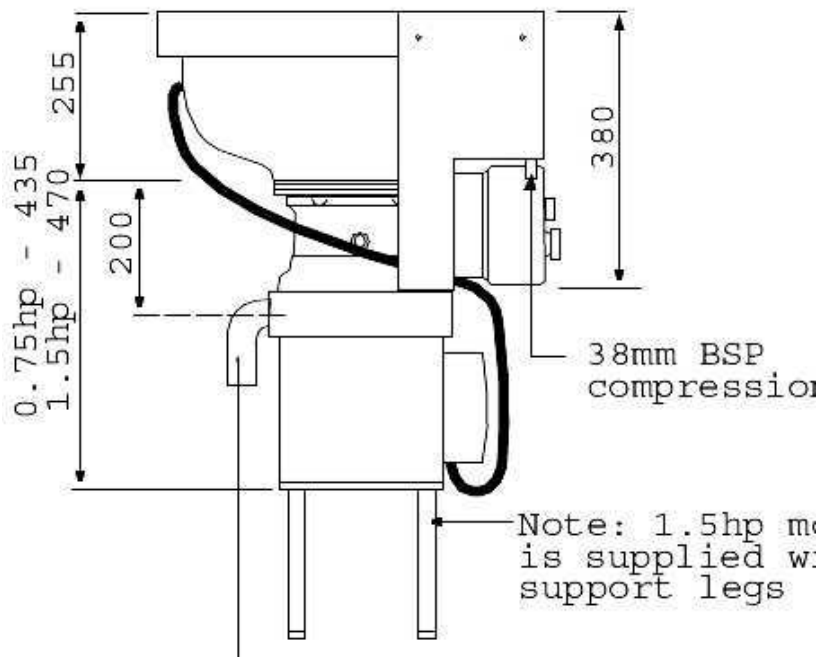
F4001 Remote control box



Plan



Front Elevation





Name: **Inset
hopper
waste
disposal
(H50751H)
0.75hp
1ph**

Art No: H50751H

Material: Stainless
steel 18/8
1.4301

Dimensions: 520 x 520
x 690 mm



H50751H Inset hopper waste disposal unit

0.75hp Inset hopper waste disposal unit manufactured from 0.9/1.2mm thick stainless steel for welding into dishwash tabling and can be mounted to give either front, left or right hand side feed, depending on the size of tabling. The hopper and motor are supplied separately for assembly on site. The hopper is fitted with a magnetic cutlery saver. The motor is activated using the controls on the front panel, however a separate control box can be supplied as an extra - see below.

Suitable for plate waste, left overs, vegetables and peelings, very fine fish and chicken bones.

Dimensions: 520 x 520 x 690 mm

Technical specification:

Meals capacity: 400 per day

Nominal capacity: 200kg/hr

Motor voltages: .75hp 1phase, 0.55 kw, 240v 50hz

Motor control: Wall mounted, manual reset

Fuse rating: 240v 1phase 50hz 25amps

Full load current 5.6amps

Water connection: Cold supply to 15mm pipe connector

Recommended flow rate 12 litres per min.

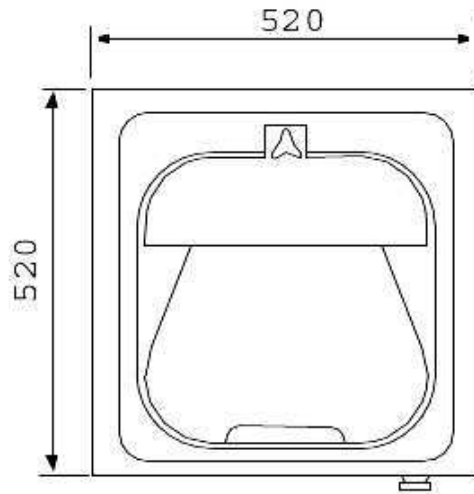
inlet pressure minimum of 0.3 bar

Waste connection: 38mm BSP outlet bend to waste

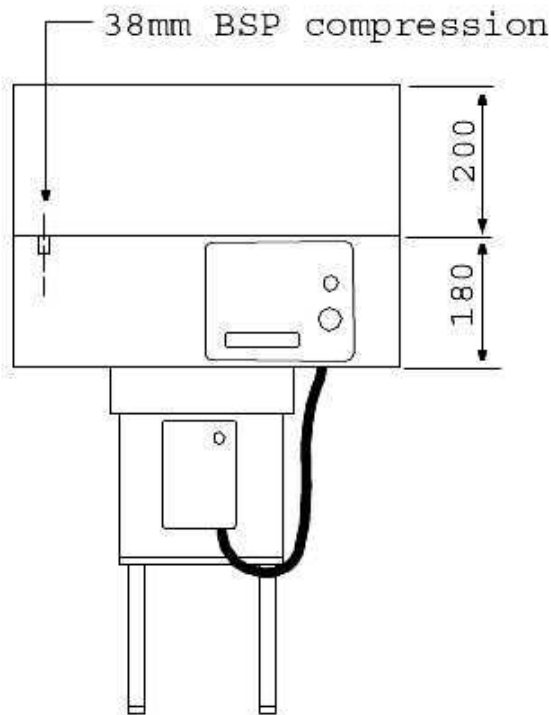
Motor: NEMA ULCSA

Extras

F4001 Remote control box



Plan



Front Elevation

