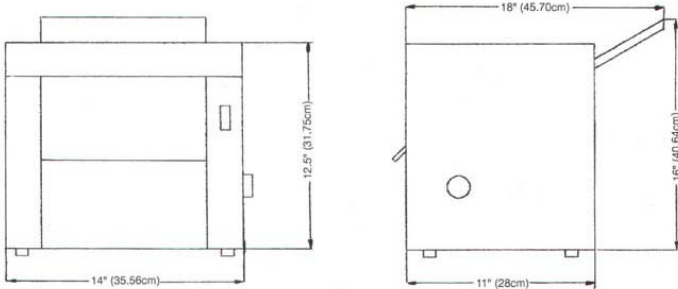


The most compact one pass sheeter with front or side operation
Ergonomic design makes it easy and simple to operate
Sheets dough to a uniformed thickness in seconds

Dimensions:



[Enlarge](#)



Standard Features:

- Safety sensors for automatic shutoff
- Synthetic rollers eliminate dough build up
- Compact design, ideal for use in limited space
- Sanitary, heavy duty, all stainless steel welded construction
- Spring loaded scrapers readily removable for easy cleaning
- Simple handle adjustments for exact uniform dough thickness
- Ergonomic design for easy operation
- Convenient side or front operation
- Maintenance free drive mechanism
- Drive mechanism isolated from roller area
- Safe...simple...easy to operate...easy to clean

ROLLERS: 3.5" (8.89cm) Dia. by 10" (25.40cm) Length

SCRAPERS: Synthetic, spring loaded, removable

BEARINGS: Sealed bearings, permanently lubricated

GEAR MOTOR: Heavy duty 1/4 HP maintenance free
Single Phase, 115V, 60Hz or 220V, 50Hz

FINISHING: All Stainless Steel

SHIP WEIGHT: 60lbs. (27.2Kgs)